

## TestAmerica NJDEP Hazsite EDD Generator 2012

Hazsite EDD generator is an application which generate NJDEP Hazsite EDD (electronic data deliverables) 2012 format.

Lab provides three HazSite files which are

- Job#V2012\_hzresult.res
- Job#V2012\_hzresult.stl
- Job#V2012\_hzsamp.smp

.res file contains lab analytical information

.stl file is certificate trust file which is unique file used in our Hazsite Generator

.smp file contains client sample information.

Sample receipt confirmation will be available in TotalAccess or can be provided upon request Job#\_sample.xls, which will be faster and easier for user to insert/update multiple information using excel features.

Basically our application helps user to enter their information which are required for two files DTST and Sample (DTST.txt & HZSAMPLE.txt)

### **DTST file:**

Sampling event, including site description, investigation phase, consultant, submittal date, and other information.

### **Sample File (HZSAMPLE):**

1. Coordinate data should adhere to be one of the following.
  - SP\_X, SP\_Y.
  - LAT\_DEGREE, LAT\_MINUTE, LAT\_SECOND, LON\_DEGREE, LON\_MINUTE, LON\_SECOND.
  - LAT\_DEGREE, LON\_DEGREE as decimal degrees with sufficient decimals and LAT\_MINUTE, LAT\_SECOND, LON\_MINUTE, LON\_SECOND set to 0.
  - LAT\_DEGREE, LON\_DEGREE with LAT\_MINUTE, LON\_MINUTE as decimal degrees with sufficient decimals and LAT\_SECOND, LON\_SECOND set to 0.
2. Data is required if sampling includes soils.
3. An explanation is required if the MATRIX and/or SAMPTYPE fields equal 'OTHER'.
4. Data are required if sampling includes Monitoring Wells. 'N/A' is acceptable for potable wells and temporary wells.
5. Data are required if sampling includes Monitoring Wells. 'N/A' is acceptable for potable wells without permit numbers.
6. Data are required if sampling includes Monitoring, Potable or Temporary Wells. 'No Permit' is acceptable for potable wells without permit numbers and temporary wells.

# TestAmerica Hazsite Utility Instructions

Once user enter all information/merge user updated excel which are required by NJDEP, User can easily export it from our application in NJDEP format, those are

- **DTST.txt**
- **HZSAMPLE.txt**
- **HZRESULT.txt**

The DTST, HZRESULT & HZSAMPLE created from the HazSite Utility program can then be run through the EDSA7 checker program. If you need EDSA Checker, link is

<http://www.state.nj.us/dep/srp/hazsite/software/edsa/>

User can download our Hazsite generator application from

<http://www.testamericainc.com/customer-support/downloads/>

The screenshot shows the TestAmerica website interface. At the top, the TestAmerica logo is on the left, and navigation links for 'Careers', 'About Us', and '1-866-785-LABS' are on the right. Below the logo is the tagline 'THE LEADER IN ENVIRONMENTAL TESTING'. A search bar with the text 'Search Enter a keyword' and a magnifying glass icon is also present. A green navigation bar contains links for 'Home', 'Locations', 'Industries We Serve', 'Services We Offer', 'Data Solutions', and 'Customer Support'. Below this, a breadcrumb trail reads 'Home > Customer Support > Downloads'. On the left, a 'Customer Support' dropdown menu is open, listing options like 'Bottle Kits and Courier Services', 'Logistics and On-Site Services', 'International Support', 'Client Services Organization', and 'Program Management'. The main content area is titled 'Downloads' and features a 'TOOLS' section. Within this section, the link 'New Jersey Hazsite Utility v2 2012 (Current NJDEP HAZ Format)' is highlighted with a red rectangular box. Other links in the tools section include 'New Jersey Hazsite Utility' and 'New Jersey Hazsite Utility ver. 1.1 for Windows 7'. A vertical 'Contact Us' button is located on the right side of the page.

# TestAmerica Hazsite Utility Instructions

NJDEPHazSite01.hze \* - TestAmerica NJDEP HazSite EDD Generator 2012

File Tools Help

Import .stl... Export EDD...

Project Samples Results Samples Info

SRP ID:  Directory:

Description:

Consultant:

Phase:  Status:

Transmit:  Submit Date:

Package #:

Contact information for data preparer

Name:

Tel:  Ext:

Email:

Ready

# TestAmerica Hazsite Utility Instructions

For help, please click on Help or (?) option on top tool bar

The screenshot shows a web browser window displaying the TestAmerica NJDEP HazSite EDD Generator application. The browser's address bar shows the URL <http://www.testamericainc.com>. The page features the TestAmerica logo at the top left, with the tagline "THE LEADER IN ENVIRONMENTAL TESTING". A navigation menu on the left side lists the following items: "Quick Start", "Importing .stl", "Modifying Data", "Exporting Data", "Project Files", "NJDEP Contact", and "Importing Excel". The main content area is titled "NJDEP HazSite EDD Generator" and includes a description of the application's purpose: "The TestAmerica NJDEP HazSite EDD Generator application will import TestAmerica encrypted EDD files, allow the data to be edited, and export the data into a tab-delimited or .dbf format according to NJDEP Site Remediation Program specifications with additional support for air-related work." Below this description, there are sections for "Contents" and "Version History". The "Contents" section lists links for "Quick Start", "Importing Data", "Modifying Data", "Exporting Data", "Project Files", "NJDEP Contact", and "Importing Sample excel". The "Version History" section lists the following updates: "3.0 - Importing Testamerica's sample excel.", "2.0.2 - Sampdate is required field and format is MM/DD/YYYY, Data Submission and NJDEP Information.", "2.0.1 - Tdanalyz is required field has been changed from DANALYZ and new format is MM-DD-YYYY hh:mm", "2.0 - Updated as per new NJDEP Hazsite Format.", "1.1 - Support for .dbf output and air-related results was added. In addition, a date formatting issue was fixed during file export.", and "1.0 - Initial release."

# TestAmerica Hazsite Utility Instructions

---

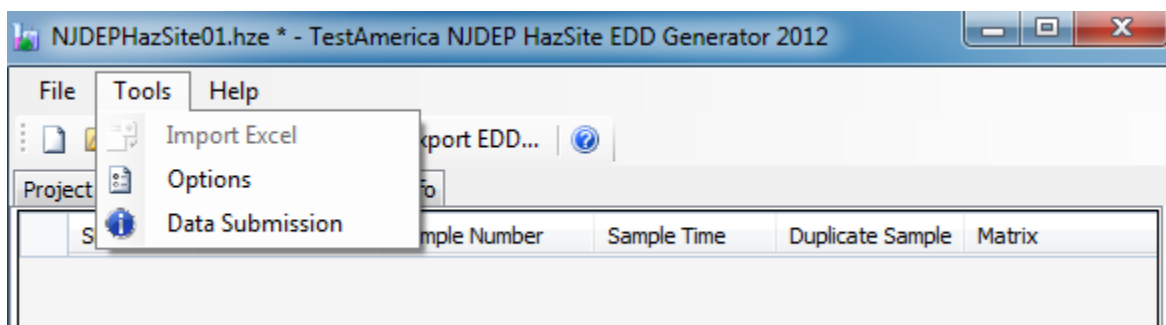
## Version 3.0

Importing sample Excel....

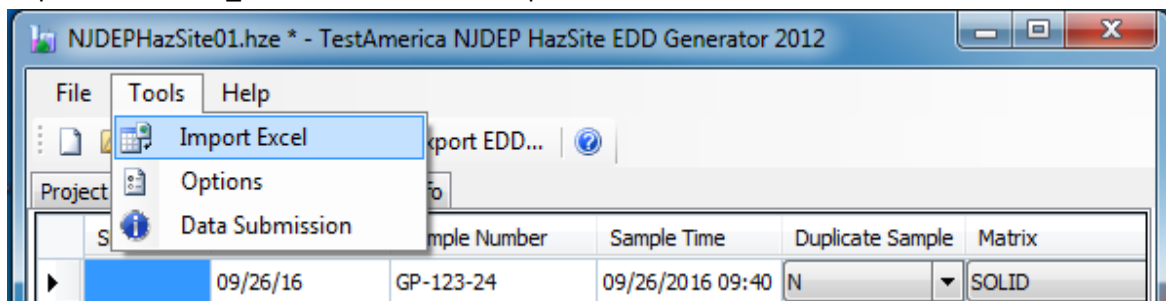
The TestAmerica NJDEP HazSite EDD Generator application will now import TestAmerica's sample excel file. The file *Job#\_sample.xls* is generated by TestAmerica. Sample receipt confirmation will be available in TotalAccess or can be provided upon request. This file contains basic laboratory sample information (i.e. Lab SampleID, Sample Date, and Client ID). User will fill in the blank fields (i.e. LAT\_DEGREE, LAT\_MINUTE) as necessary and all other information to satisfy NJDEP HazSite EDD. User will use the excel option/feature to cut, copy, insert multiple data/fields. All data entry can be saved on this excel file at client's local drive as soon as Sample receipt confirmation is available.

Once the TestAmerica HazSite EDD is available, then both files can be merged (.stl file (laboratory information file) and *sample.xls* file (user updated file)) using our HazSite Generator.

User must import .stl file first in order to enable the excel import feature. When the file is imported, provided all programming conditions are met, the 'Samples' tab will be updated. User can still utilize the current feature to correct/update sample data entries in 'Samples' tab.

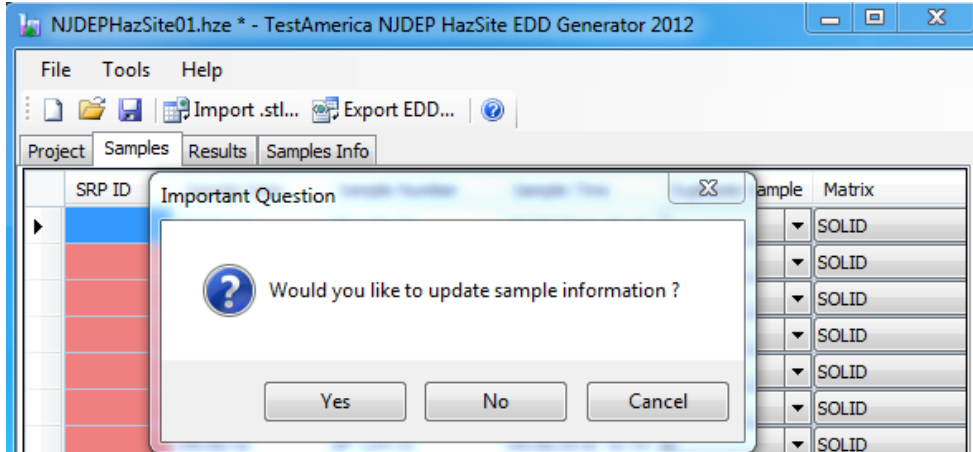


Import Job#V2012\_hzresult.stl to enable import excel feature

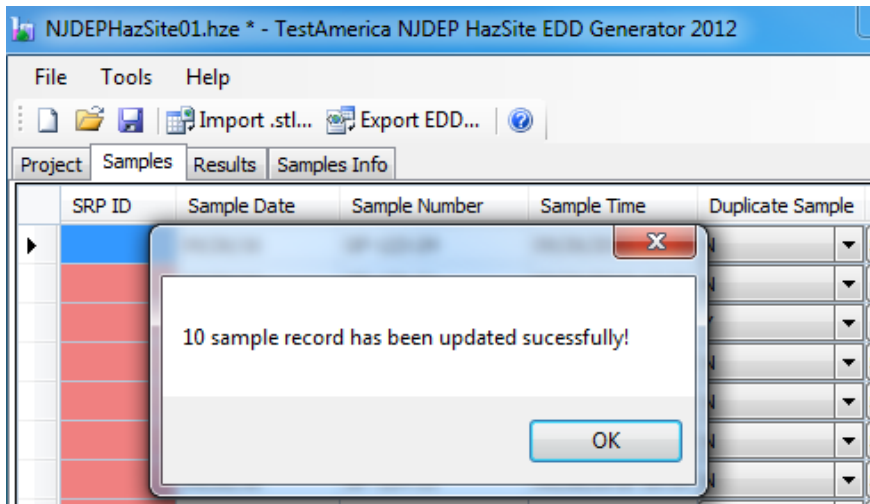


After picking *Job#\_sample.xls*

# TestAmerica Hazsite Utility Instructions



Samples tab will update information from *Job#\_sample.xls*

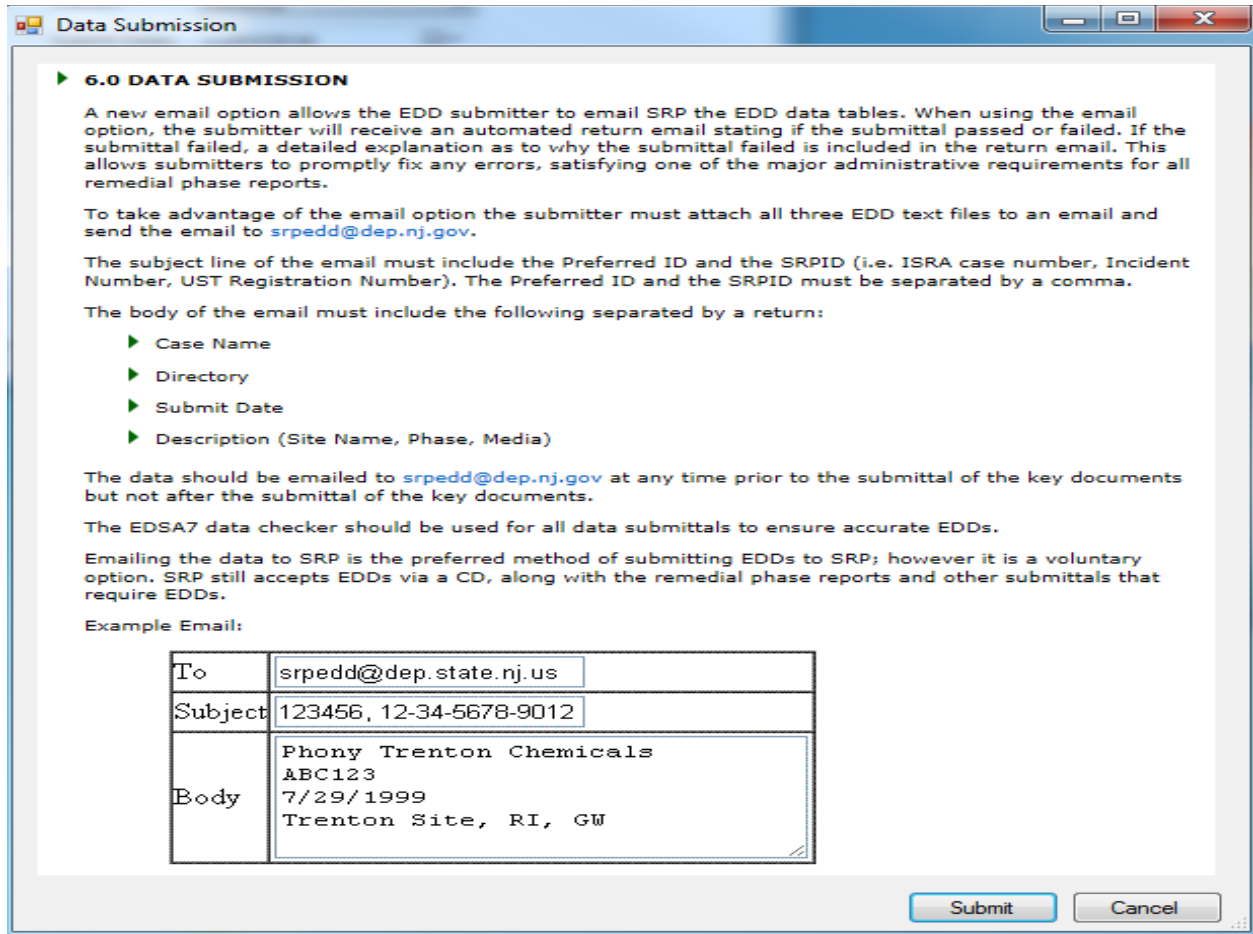


# TestAmerica Hazsite Utility Instructions

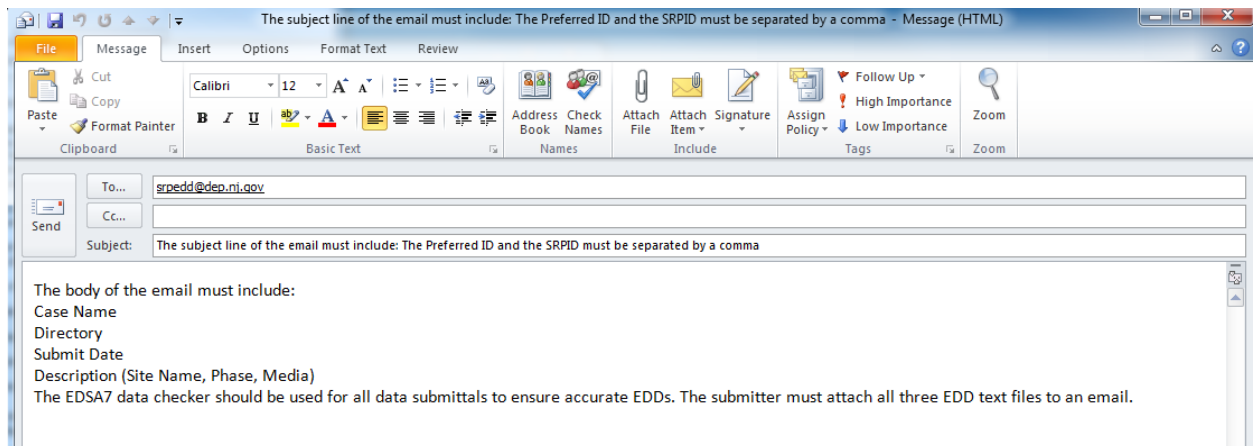
## Version 2.0.2

New updated HazSite Generator now available for download

- Sampledate format updated to MM/DD/YYYY
- Added Data submission and NJDEP Contact information

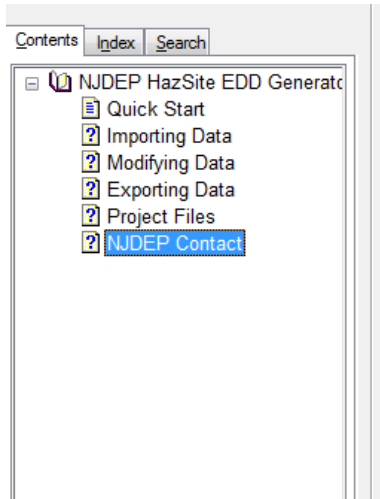


Once client click Submit button it will calls the local default email client. See screen shot below with information



# TestAmerica Hazsite Utility Instructions

---



## NJDEP Contact Information

---

### Web Page

- SRP main website: [www.nj.gov/dep/srp](http://www.nj.gov/dep/srp)
- Hazsite website: [www.nj.gov/dep/srp/hazsite](http://www.nj.gov/dep/srp/hazsite)

### Email

- General Hazsite contact: [hazsite@dep.nj.gov](mailto:hazsite@dep.nj.gov)
- Submit EDD through email to: [srpedd@dep.nj.gov](mailto:srpedd@dep.nj.gov)

### Help Desk

- For technical issues and assistance, please call the SRP Help Desk (609) 633-1380

If you have any questions or comments or need any help with TestAmerica HazSite utility please contact your AE/PM/PMA, will forward it to TestAmerica's helpdesk.